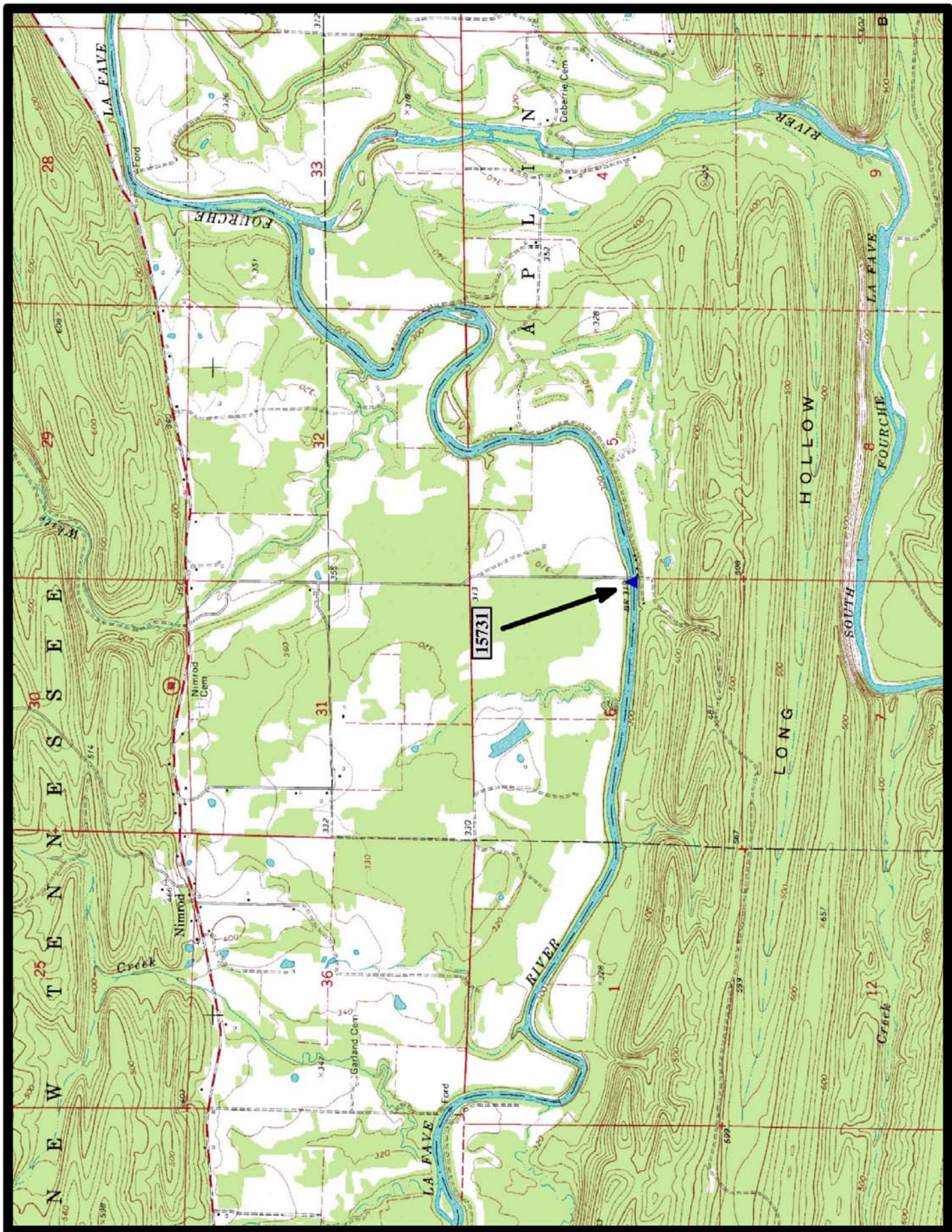


- ▲ In-Service Camelback Thru Truss (2)
- ⊘ Demolished NR Camelback Thru Truss (0)
- ◼ Preserved Camelback Thru Truss (1)

Camelback Thru Truss Bridges



HISTORIC BRIDGE #15731
WALLCE ROAD (Co. Rd. 18)
PERRY COUNTY
CAMELBACK THRU TRUSS
CROSSES - FOURCHE LAFAVE RIVER
DATE OF CONSTRUCTION - 1909
BUILDER - SOUTHWESTERN BRIDGE COMPANY, JOPLIN, MO.
HISTORIC BRIDGE INVENTORY DATE - 2005
SHPO NUMBER - PE0090
HAER NUMBER - AR-66
DATE LISTED ON NATIONAL REGISTER - 8/1/2008
LAT./LONG. 34:56:10.46, -93:03:19.42

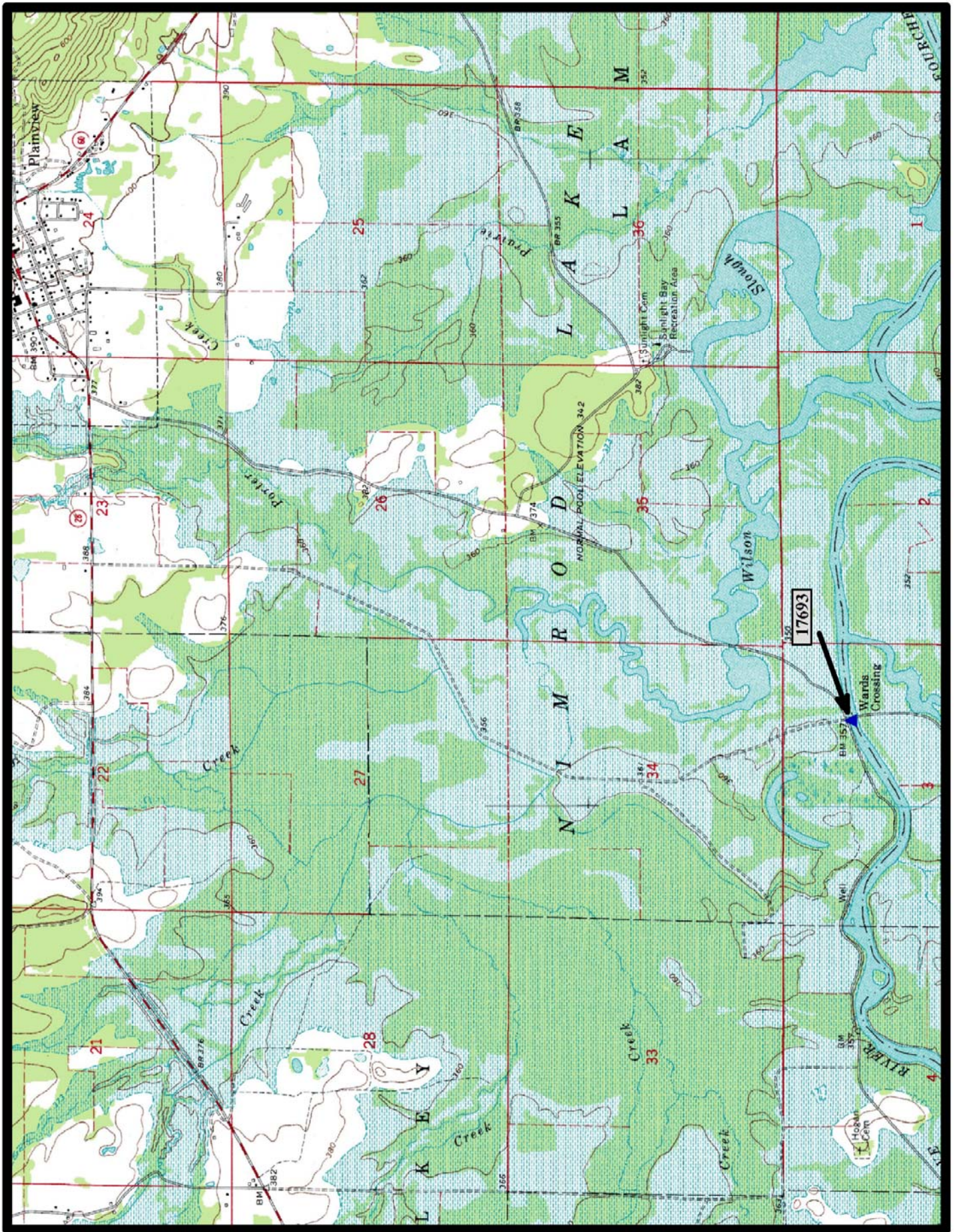


↑
North

Nimrod 7.5 min. Quad



HISTORIC BRIDGE #17693
SUNLIGHT BAY ROAD (Co. Rd. 8)
YELL COUNTY
CAMELBACK THRU TRUSS
CROSSES - FOURCHE LAFAYE RIVER
DATE OF CONSTRUCTION - 1905
BUILDER - CONVERSE BRIDGE COMPANY, CHATTANOOGA, TN
HISTORIC BRIDGE INVENTORY DATE - 2005
SHPO NUMBER - YE0176
HAER NUMBER - AR-70
DATE LISTED ON NATIONAL REGISTER - 6/4/2008
LAT./LONG. 34:56:39.98, -93:19:39.90

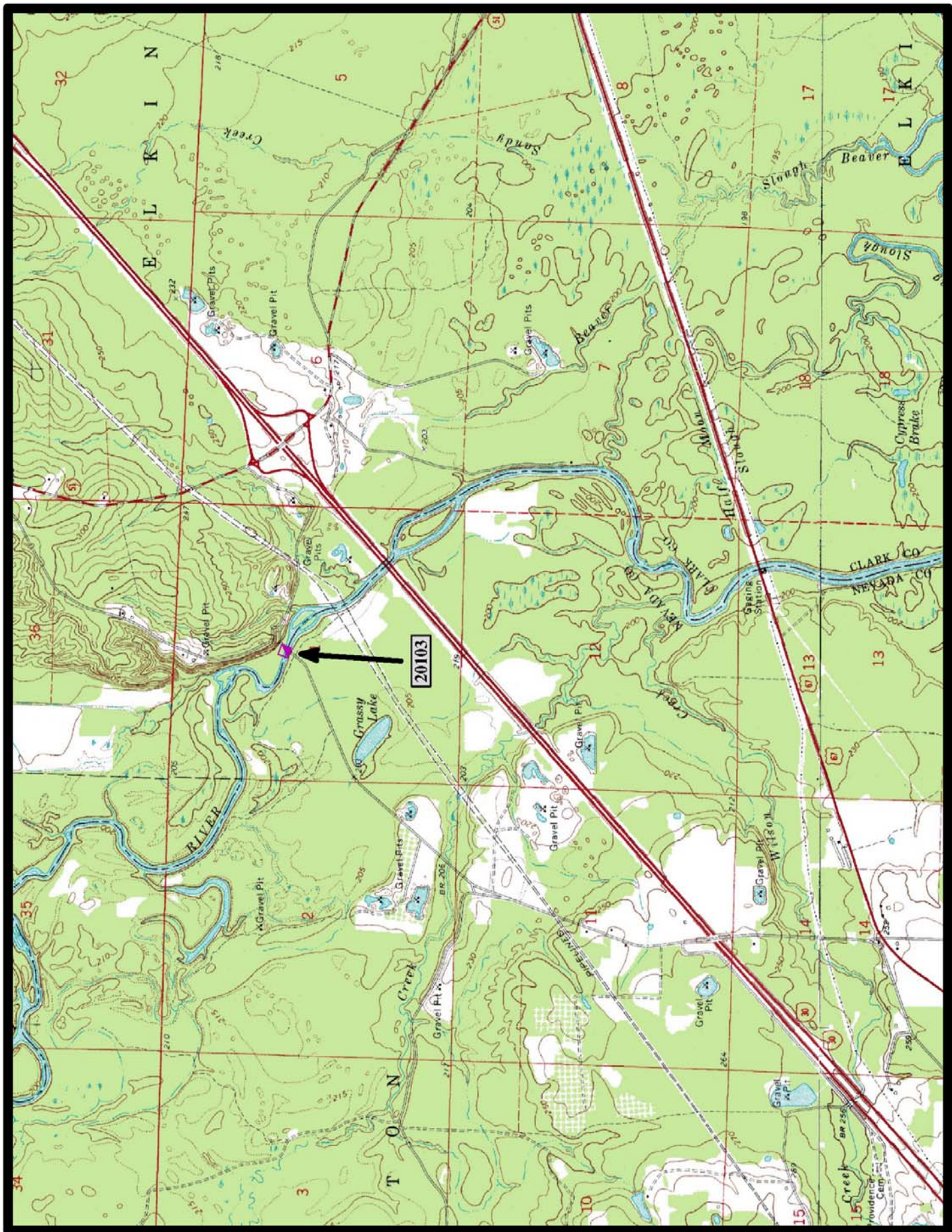


↑
North

Plainview 7.5 min. Quad



PRESERVED HISTORIC BRIDGE #20103
REPLACED SECTION OF COUNTY ROAD 479
CLARK COUNTY
CAMELBACK THRU TRUSS
CROSSES - LITTLE MISSOURI RIVER
DATE OF CONSTRUCTION - 1908
BUILDER - MORAVA CONSTRUCTION COMPANY, CHICAGO, IL
HISTORIC BRIDGE INVENTORY DATE - 1987
SHPO NUMBER - CL0742
HAER NUMBER - AR-44
DATE LISTED ON NATIONAL REGISTER - 4/9/1995
LAT./LONG. 33:54:11.58, -93:18:34.24



↑
North

Okolona South 7.5 min. Quad